

GIRLS' SWEET 16 CHAMPIONSHIP

First Round

CENTRAL HARDIN

VS.

JOHNSON CENTRAL

March 24, 1993

VISITORS (Last Name, First)

NO.	JOHNSON CENTRAL	Tot FG		3-POINT		FT	FTA	Rebounds			PF	TP	A	TO	BLK	S	TIME	
		FG	FGA	FG	FGA			OFF	DEF	TOT								
23	BLEVINS, S.	1	9	0	4	0	0	0	0	0	4	2	1	3	0	1	19:59	
32	OAKS, JENNIFER	0	1	0	0	0	0	1	0	1	0	0	0	3	0	0	7:55	
53	LEWIS, TONYA	3	9	0	0	1	1	1	1	2	3	7	1	1	0	0	16:22	
21	SALYER, LORNA	1	2	0	0	0	0	1	0	2	0	2	0	0	0	0	21:54	
22	CASTLE, AMY	5	7	1	2	2	2	1	4	5	1	13	1	3	0	1	27:11	
54	WELLS, BERNITA	1	2	0	0	2	4	1	4	5	2	4	0	0	0	0	17:30	
12	BLAIR, MELISSA	0	4	0	1	11	12	1	0	1	1	11	1	1	0	2	19:22	
44	BROWN, SHANNON	0	3	0	2	0	0	0	1	1	1	0	1	2	0	0	14:10	
24	MUSIC, ROBIN	0	2	0	0	2	2	1	1	2	0	2	1	1	0	2	4:24	
10	HAYNARD, JODI	2	4	0	0	0	0	1	0	1	1	4	0	1	0	4	5:44	
34	RUSSELL, SUSAN	1	1	0	0	0	0	1	1	2	0	2	0	2	0	0	3:23	
42	BLAIR, ERIN	0	0	0	0	0	0	0	0	0	1	0	0	0	0	0	2:06	
TEAM REBOUNDS (INCLUDED IN TOTALS)								2										
TOTALS		14	44	1	9	18	23	8	16	24	15	47	6	24	0	10	160	
TOTAL FG 1st HALF		4/8	50.0%	2nd HALF		10/36	27.8%	GAME		14/44	31.8%	DEADBALL						
3-POINT FG 1st HALF		0/2	0.0%	2nd HALF		1/7	14.3%	GAME		1/9	11.1%	REBOUNDS				3		
FREE THROWS 1st HALF		0/1	0.0%	2nd HALF		18/22	81.8%	GAME		18/23	78.3%							

HOME (Last Name, First)

NO.	CENTRAL HARDIN	Tot FG		3-POINT		FT	FTA	Rebounds			PF	TP	A	TO	BLK	S	TIME	
		FG	FGA	FG	FGA			OFF	DEF	TOT								
31	ALCORN, BECCA	6	9	0	0	1	2	5	9	14	5	13	1	5	1	3	27:18	
40	JEFFRIES, JULIE	4	9	0	0	1	5	1	4	5	2	9	5	4	1	6	29:59	
50	CHITWOOD, LEE	6	8	0	0	1	2	2	0	2	5	13	0	2	0	0	14:26	
21	KERR, COURTNEY	1	6	1	5	4	4	1	3	4	3	7	7	7	1	1	31:01	
24	MASTERSON, C.	5	6	0	0	1	1	2	2	4	2	11	3	2	1	0	23:42	
15	GRAVELL, REGINA	3	7	0	0	1	1	1	1	2	1	7	0	2	0	0	10:21	
54	PASS, TONYA	0	5	0	0	0	0	0	1	1	3	0	0	0	0	0	3:58	
10	TABB, LAURA	0	1	0	0	0	0	0	1	1	0	0	2	0	0	1	7:59	
35	MEADORS, CASS	0	1	0	0	1	2	1	1	2	2	1	0	0	0	0	1:28	
34	MEADORS, CORISSA	1	2	0	0	0	0	1	0	1	0	2	0	0	0	0	2:43	
53	HILL, MARY	0	1	0	0	0	0	1	0	1	0	0	0	0	0	0	0:27	
25	EMBRY, JESSICA	1	1	1	1	0	0	0	0	0	0	3	0	0	0	0	0:25	
22	RICHARDSON, S.	0	0	0	0	0	0	0	0	0	0	0	0	0	0	0	0:25	
42	JORDAN, RICHAN	0	0	0	0	0	0	0	0	0	0	0	0	0	0	0	0:25	
51	HERBERT, TARA	0	0	0	0	0	0	0	1	1	0	0	0	0	0	0	0:25	
TEAM REBOUNDS (INCLUDED IN TOTALS)								1										
TOTALS		27	56	2	7	10	17	16	23	39	23	66	18	22	4	11	160	
TOTAL FG 1st HALF		8/14	57.1%	2nd HALF		19/42	45.2%	GAME		27/56	48.2%	DEADBALL						
3-POINT FG 1st HALF		0/3	0.0%	2nd HALF		2/4	50.0%	GAME		2/7	28.6%	REBOUNDS				5		
FREE THROWS 1st HALF		2/4	50.0%	2nd HALF		8/13	61.5%	GAME		10/17	58.8%							

OFFICIALS: JANICE BAKER, RONNIE DAY, ALT. -R. CARLTON
 Technicals: None

SCORE BY PERIODS

JOHNSON CENTRAL	8	11	7	21	=	47
CENTRAL HARDIN	18	13	18	17	=	66

Attendance: 3,850

COMMENTS: POINTS OFF TURNOVERS SECOND CHANCE POINTS

JOHNSON CENTRAL	19	CENTRAL HARDIN	21	JOHNSON CENTRAL	6	CENTRAL HARDIN	19
-----------------	----	----------------	----	-----------------	---	----------------	----

Player	Team	CENTRAL HARDIN	Time	Score	JOHNSON CENTRAL	Player	Team
ALCORN, BECCA, KERR, COURTNEY, JEFFRIES, JULIE, CHITWOOD, LEE, MASTERSON, C.			SALYER, LORNA, BLAIR, MELISSA, CASTLE, AMY, MUSIC, ROBIN, BROWN, SHANNON Ball to LADY EAGLES				
4	7	Foul on CHITWOOD, LEE	4 7:44			2-2	100% 8-11 72.7%
5-8	62.5% 22-44 50.0%	4 ft Lane Jump shot by ALCORN, BECCA Assist by KERR, COURTNEY	4 7:44 49-28*		MUSIC, ROBIN, 1 & Bonus made both		
6	13		4 7:38 *51-28				
5-6	83.3% 23-45 51.1%	Turnaround Layup by CHITWOOD, LEE Assist by KERR, COURTNEY	4 7:20 51-31*		3 pt 22 ft Right Side Jump shot by CASTLE, AMY Assist by MUSIC, ROBIN	5-7	71.4% 11-32 34.3%
7	14		4 7:07 *53-31			1	6
6-7	85.7% 24-46 52.1%	2 ft Lane Turnaround by CHITWOOD, LEE Assist by JEFFRIES, JULIE	4 6:39		Foul on BROWN, SHANNON		
3	15		4 6:39		Sub In: LEWIS, TONYA Out: BROWN, SHANNON		
3	8	Foul on ALCORN, BECCA	4 6:15 *55-31				
6-9	66.6% 25-48 52.0%	4 ft Lane Jump shot by ALCORN, BECCA Assist by JEFFRIES, JULIE	4 5:44		BLAIR, MELISSA, 2 Free Throws made both	5-6	83.3% 10-13 76.9%
4	16		4 5:44		Sub In: MAYNARD, JODI Out: CASTLE, AMY		
1-4	25.0% 7-12 58.3%	JEFFRIES, JULIE, 2 Free Throws missed 1st made 2nd Foul on JEFFRIES, JULIE	4 5:09 *57-33				
4	10	Foul on ALCORN, BECCA	4 4:38		Foul on BLAIR, MELISSA	1	7
			4 4:36 *58-33				
			4 4:34				
			4 4:34		SALYER, LORNA, 1 & Bonus missed 1st	0-1	00.0% 10-14 71.4%
			4 4:32				
			4 4:32		58-35* BLAIR, MELISSA, 1 & Bonus made both	7-8	87.5% 12-16 75.0%
			4 4:21		Layup Off Fast Break by MAYNARD, JODI	1-1	100% 12-36 33.3%
			4 4:18		Sub In: CASTLE, AMY Out: SALYER, LORNA		
			4 4:18		Sub In: BLEVINS, S. Out: MUSIC, ROBIN		
			4 4:08				
			4 4:07				
			4 4:07		58-39* BLAIR, MELISSA, 1 & Bonus made both	9-10	90.0% 14-18 77.7%
			4 3:52				
			No. 1 CENTRAL HARDIN T I M E - O U T				
			4 3:25				
			4 3:24		58-41* BLAIR, MELISSA, 1 & Bonus made both	11-12	91.6% 16-20 80.0%
			4 3:23		Foul on MAYNARD, JODI	1	5
			4 3:23		Subs In: BROWN, SHANNON, WELLS, BERNITA, RUSSELL, SUSAN Out: CASTLE, AMY, BLEVINS, S., LEWIS, TONYA		
4-4	100% 9-14 64.2%	KERR, COURTNEY, 1 & Bonus made both Foul on ALCORN, BECCA	4 3:23 *60-41				
5	13		4 3:01				
			4 3:01				
			4 3:01		60-43* WELLS, BERNITA, 1 & Bonus made both	2-4	50.0% 18-22 81.8%
			4 2:35		Foul on BLAIR, MELISSA	2	9
1-5	20.0% 9-15 60.0%	JEFFRIES, JULIE, 1 & Bonus missed 1st	4 2:35				
			4 2:22		60-45* 4 ft Lane Follow by RUSSELL, SUSAN	1-1	100% 13-40 32.5%
1-1	100% 26-50 52.0%	3 ft Lane Turnaround by MEADORS, CORISSA Assist by JEFFRIES, JULIE	4 2:06		Sub In: BLAIR, ERIN Out: BLAIR, MELISSA		
5	17		4 2:06 *62-45				
			4 0:52				
			4 0:42		Foul on BLAIR, ERIN	1	10
1-2	50.0% 10-17 58.8%	MEADORS, CASS., 2 Free Throws made 1st missed 2nd	4 0:42 *63-45				
			4 0:42		Sub In: MUSIC, ROBIN Out: WELLS, BERNITA		
3	14	Foul on PASS, TONYA Subs In: EMBRY, JESSICA, RICHARDSON, S., JORDAN, RICHAN, HERBERT, TARA Out: MEADORS, CORISSA, MEADORS, CASS., HILL, MARY, PASS, TONYA	4 0:25				
			4 0:25				
1-1	100% 27-56 48.2%	3 pt 22 ft Left Angle Jump shot by EMBRY, JESSICA Assist by TABB, LAURA	4 0:25		MAYNARD, JODI, 1 & Bonus missed 1st	0-1	00.0% 18-23 78.2%
2	18		4 0:16 *66-45				
			4 0:05		66-47* Driving Layup by MAYNARD, JODI	2-4	50.0% 14-44 31.8%

JOHNSON CENTRAL "LADY EAGLES" vs CENTRAL HARDIN "LADY BRUINS"
2nd Half Play by Play

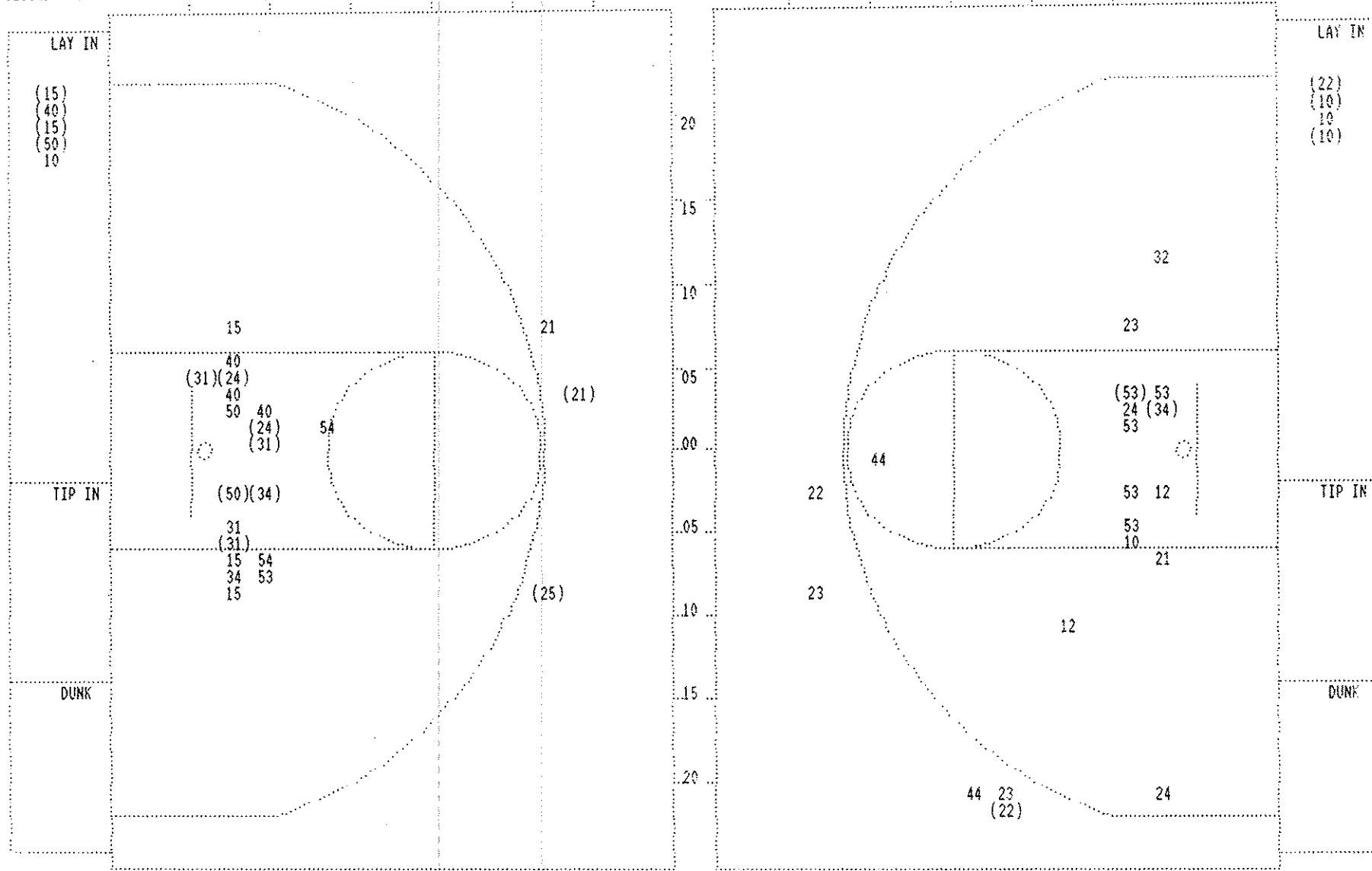
Tip off at 9:00 p.m. on 03/24/93 at GIRLS STATE TOURNEY GM 4
Produced by the KHSAA Sweet Sixteen Stat Crew with FINAL III - a Product of LEXICON SPORTS

Player	Team	CENTRAL HARDIN
ALCORN, BECCA, JEFFRIES, JULIE, CHITWOOD, LEE, KERR, COURTNEY, MASTERSON, C. Ball to LADY BRUINS		
4-5	80.0%	15-31 48.3%
1	1	3 ft Lane Follow by MASTERSON, C. Foul on MASTERSON, C.
3	2	Foul on CHITWOOD, LEE
1-2	50.0%	4-9 50.0%
2	3	CHITWOOD, LEE, 2 Free Throws made 1st missed 2nd
2	4	Foul on MASTERSON, C. Foul on ALCORN, BECCA
2	5	Sub In: GRAVELL, REGINA Out: CHITWOOD, LEE Foul on KERR, COURTNEY
1-6	16.6%	16-33 48.4%
2	9	3 pt 22 ft Straight Away Jump shot by KERR, COURTNEY Assist by JEFFRIES, JULIE
1-1	100%	5-9 55.5%
		MASTERSON, C., 1 Free Throw made
4-6	66.6%	17-36 47.2%
		3 ft Lane Follow by ALCORN, BECCA
		REB: 27 A: 9 BLK: 2 TO: 12 PF: 5 S: 6 FT: 5-9 55.5% FG: 17-36 47.2%
1	6	Foul on GRAVELL, REGINA
2-6	33.3%	18-40 45.0%
5	10	Layup Off Fast Break by GRAVELL, REGINA Assist by KERR, COURTNEY
5-6	83.3%	19-41 46.3%
1	11	6 ft Lane Jump shot by MASTERSON, C. Assist by ALCORN, BECCA Sub In: TABB, LAURA Out: MASTERSON, C.
4-9	50.0%	20-42 47.6%
3-7	42.8%	21-43 48.8%
1	12	Layup Off Fast Break by JEFFRIES, JULIE Layup Off Fast Break by GRAVELL, REGINA Assist by TABB, LAURA
		Sub In: HEADORS, CORISSA Out: ALCORN, BECCA Sub In: HEADORS, CASS. Out: KERR, COURTNEY
1-1	100%	6-10 60.0%
		GRAVELL, REGINA, 1 Free Throw made Sub In: MASTERSON, C. Out: JEFFRIES, JULIE

PAGE : 1

Time	Score	JOHNSON CENTRAL	Player	Team
BLEVINS, S., OAKS, JENNIFER, LEWIS, TONYA, SALYER, LORNA, CASTLE, AMY				
3	7:47	*33-19		
3	6:45			
3	6:37	33-21*	4 ft Lane Turnaround by LEWIS, TONYA Assist by CASTLE, AMY	3-6 50.0% 9-23 39.1% 1 5
3	6:37	33-22*	LEWIS, TONYA, 1 Free Throw made	1-1 100% 4-7 57.1%
3	6:28		Foul on LEWIS, TONYA	2 1
3	6:28	*34-22		
3	6:24		Sub In: WELLS, BERNITA Out: OAKS, JENNIFER	
3	5:58			
3	5:51			
3	5:51	34-24*	CASTLE, AMY, 2 Free Throws made both	2-2 100% 6-9 66.6%
3	5:25			
3	5:24			
3	4:58	*37-24		
3	4:32		Foul on LEWIS, TONYA	3 2
3	4:32		Sub In: OAKS, JENNIFER Out: LEWIS, TONYA	
3	4:32	*38-24		
3	4:31		Sub In: BROWN, SHANNON Out: SALYER, LORNA	
3	4:00		Sub In: BLAIR, MELISSA Out: BLEVINS, S.	
3	2:55	*40-24		
3	2:53			
		JOHNSON CENTRAL No. 1		
			REB: 12 A: 5 BLK: 0 TO: 12 PF: 2 S: 1 FT: 6-9 66.6% FG: 9-28 32.1%	
3	2:42		Sub In: BLEVINS, S. Out: OAKS, JENNIFER	
3	2:30		Foul on BLEVINS, S.	3 3
3	2:24			
3	1:33	*42-24		
3	1:08	*44-24		
3	1:04			
3	0:46		Foul on BLEVINS, S.	4 4
3	0:35	44-26*	Layup Off Fast Break by CASTLE, AMY	4-6 66.6% 10-29 34.4%
3	0:28	*46-26		
3	0:07	*48-26		
3	0:07		Foul on WELLS, BERNITA	2 5
3	0:07			
3	0:07			
3	0:07	*49-26		
3	0:03			

SECOND HALF SHOT CHART Produced by the KHSAA Sweet Sixteen Stat Crew with FINAL III - a Product of LEXICON SPORTS™



CENTRAL HARDIN				
Player			Player	
31 - ALCORN, BE	3 / 4	75.0%	10 - TABB, LAUR	0 / 1 0.0%
49 - JEFFRIES,	1 / 4	25.0%	15 - GRAVELL, R	2 / 5 40.0%
50 - CHITWOOD,	2 / 3	66.6%	25 - EMBRY, JES	1 / 1 100.0%
21 - KERR, COUR	1 / 2	50.0%	34 - MEADORS, CO	1 / 2 50.0%
24 - MASTERSON,	2 / 2	100.0%	53 - HILL, MARY	0 / 1 0.0%
Layups	1-9 Ft	10-15 Ft	Over 15 Ft	3 Pointers Total
4 / 5	7 / 19		2 / 3	13 / 27
80.0%	36.8%		66.7%	48.1%

JOHNSON CENTRAL				
Player			Player	
23 - BLEVINS, S	0 / 3	0.0%	10 - MAYNARD, J	2 / 4 50.0%
32 - OAKS, JENN	0 / 1	0.0%	12 - BLAIR, MEL	0 / 2 0.0%
53 - LEWIS, TON	1 / 5	20.0%	24 - MUSIC, ROB	0 / 2 0.0%
21 - SALYER, LO	0 / 1	0.0%	34 - RUSSELL, S	1 / 1 100.0%
22 - CASTLE, AM	2 / 3	66.6%	44 - BROWN, SHA	0 / 2 0.0%
Layups	1-9 Ft	10-15 Ft	Over 15 Ft	3 Pointers Total
3 / 4	2 / 11	0 / 2	0 / 2	1 / 5 6 / 24
75.0%	18.2%	0.0%	0.0%	20.0%

Official Boxscore * OFFICIAL FIRST HALF *

Date: 03-24-93 Site:GIRLS STATE TOURNEY GM 4

VISITORS (Last Name, First)

NO.	JOHNSON CENTRAL	Tot FG		3-POINT		FT	FTA	Rebounds			PF	TP	A	TO	BLK	S	TIME
		FG	FGA	FG	FGA			OFF	DEF	TOT							
23	BLEVINS, S.	1	6	0	2	0	0	0	0	0	2	2	1	3	0	0	12:22
32	OAKS, JENNIFER	0	0	0	0	0	0	0	0	0	0	0	0	1	0	0	4:29
53	LEWIS, TONYA	2	4	0	0	0	0	0	1	1	1	4	1	0	0	0	9:38
21	SALYER, LORNA	1	1	0	0	0	0	0	2	2	0	2	0	0	0	0	14:43
22	CASTLE, AMY	3	4	0	0	0	0	0	2	2	1	6	0	1	0	1	16:00
54	WELLS, BERNITA	1	2	0	0	0	0	1	0	1	1	6	0	0	0	0	8:25
12	BLAIR, MELISSA	0	2	0	1	3	4	0	0	0	0	3	1	4	0	0	9:28
44	BROWN, SHANNON	0	1	0	1	0	0	0	1	1	0	0	1	1	0	0	4:55
TEAM REBOUNDS (INCLUDED IN TOTALS)																	
TOTALS		8	20	0	4	3	6	1	7	8	5	19	4	10	0	1	80
TOTAL FG 1st HALF		4	8	50.0%		2nd HALF		4	12	33.3% GAME		8	20	40.0%		DEADBALL	
3-POINT FG 1st HALF		0	2	0.0%		2nd HALF		0	2	0.0% GAME		0	4	0.0%		REBOUNDS 3	
FREE THROWS 1st HALF		0	1	0.0%		2nd HALF		3	5	60.0% GAME		3	6	50.0%			

HOME (Last Name, First)

NO.	CENTRAL HARDIN	Tot FG		3-POINT		FT	FTA	Rebounds			PF	TP	A	TO	BLK	S	TIME
		FG	FGA	FG	FGA			OFF	DEF	TOT							
31	ALCORN, BECCA	3	5	0	0	1	2	2	5	7	1	7	0	2	0	1	14:24
40	JEFFRIES, JULIE	3	5	0	0	0	0	1	1	2	1	6	1	2	1	1	14:54
50	CHITWOOD, LEE	4	5	0	0	0	0	2	0	2	2	3	0	0	0	0	7:58
21	KERR, COURTNEY	0	4	0	4	2	2	1	1	2	1	2	4	2	0	1	16:00
24	HASTERSON, C.	3	4	0	0	0	0	1	0	1	0	6	3	0	0	0	14:35
15	GRAVELL, REGINA	1	2	0	0	0	0	1	1	2	0	2	0	1	0	0	3:50
54	PASS, TONYA	0	3	0	0	0	0	0	1	1	2	2	0	0	0	0	3:31
10	YABB, LAURA	0	0	0	0	0	0	0	1	1	0	0	0	0	0	1	3:54
35	HEADORS, CASS.	0	1	0	0	0	0	0	1	1	2	0	0	0	0	0	0:54
TEAM REBOUNDS (INCLUDED IN TOTALS)																	
TOTALS		14	29	0	4	3	6	8	11	19	9	31	8	7	1	4	80
TOTAL FG 1st HALF		8	14	57.1%		2nd HALF		6	15	40.0% GAME		14	29	48.3%		DEADBALL	
3-POINT FG 1st HALF		0	3	0.0%		2nd HALF		0	1	0.0% GAME		0	4	0.0%		REBOUNDS 3	
FREE THROWS 1st HALF		2	4	50.0%		2nd HALF		1	2	50.0% GAME		3	6	50.0%			

OFFICIALS: JANICE BAKER, RONNIE DAY, ALT. -R. CARLTON
 Technicals: None

SCORE BY PERIODS			
JOHNSON CENTRAL	8	11	= 19
CENTRAL HARDIN	13	13	= 31

Attendance: 3,850

COMMENTS:	POINTS OFF TURNOVERS	SECOND CHANCE POINTS
JOHNSON CENTRAL	4	10
CENTRAL HARDIN	10	0
JOHNSON CENTRAL	0	12
CENTRAL HARDIN	0	12

Produced by the KHSAA Sweet Sixteen Stat Crew with FINAL III - a Product of LEXICON SPORTS™

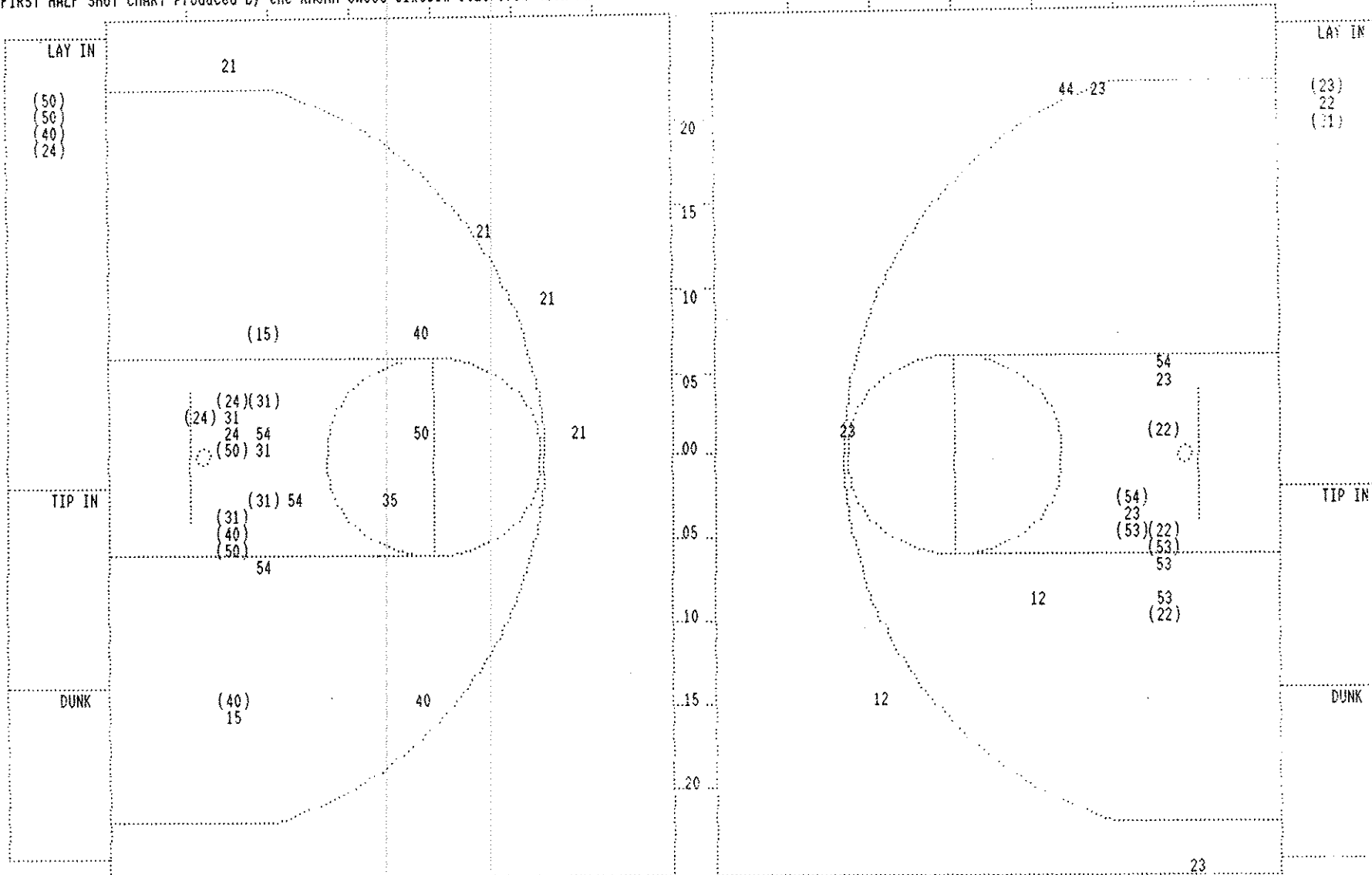
JOHNSON CENTRAL "LADY EAGLES" vs CENTRAL HARDIN "LADY BRUINS"
1st Half Play by Play

PAGE : 2

Tip off at 9:00 p.m. on 03/24/93 at GIRLS STATE TOURNEY GM 4
Produced by the KHSAA Sweet Sixteen Stat Crew with FINAL III - a Product of LEXICO

Player	Team	CENTRAL HARDIN	Time	Score	JOHNSON CENTRAL	Player	Team					
GRAVELL, REGINA	KERR, COURTNEY	ALCORN, BECCA	JEFFRIES, JULIE	CHITWOOD, LEE	BLEVINS, S.	SALYER, LORNA	CASTLE, AMY	WELLS, BERNITA	BLAIR, MELISSA			
1-2	50.0%	9-16	56.2%	8 ft Right Side Jump shot by GRAVELL, REGINA	2	7:33	*20-8					
4		7		Assist by KERR, COURTNEY	2	7:17						
2		5		Foul on CHITWOOD, LEE	2	7:17						
				Sub In: MASTERSON, C. Out: CHITWOOD, LEE	2	7:03	20-10*	Driving Layup by BLEVINS, S.	1-4	25.0%	5-9	55.5%
3-3	100%	10-17	58.8%	Turnaround Layup by JEFFRIES, JULIE	2	6:47	*22-10					
3		8		Assist by MASTERSON, C.	2	6:09						
1		6		Foul on ALCORN, BECCA	2	5:49						
1		7		Sub In: MEADORS, CASS. Out: JEFFRIES, JULIE	2	5:33						
				Foul on MEADORS, CASS.	2	5:33	22-12*	BLAIR, MELISSA, 2 Free Throws made both	2-3	66.5%	2-3	66.6%
2-3	66.6%	11-19	57.8%	Layup Off Fast Break by MASTERSON, C.	2	5:03	*24-12					
2		8		Foul on MEADORS, CASS.	2	4:55						
				Sub In: JEFFRIES, JULIE Out: MEADORS, CASS.	2	4:55						
				Sub In: TABB, LAURA Out: GRAVELL, REGINA	2	4:55		Sub In: BROWN, SHANNON Out: SALYER, LORNA				
2-3	66.6%	12-21	57.1%	4 ft Lane Follow by ALCORN, BECCA	2	3:47	*26-13	BLAIR, MELISSA, 1 & Bonus made both	3-4	75.0%	3-4	75.0%
					2	4:35	*26-13					
					2	3:47		Foul on WELLS, BERNITA	1			3
					2	3:38		Foul on BLEVINS, S.	2			4
1-2	50.0%	3-6	50.0%	ALCORN, BECCA, 2 Free Throws missed 1st made 2nd	2	3:38	*27-13					
					2	3:38		Sub In: SALYER, LORNA Out: BLEVINS, S.				
					2	3:38		Sub In: LEWIS, TONYA Out: WELLS, BERNITA				
3-4	75.0%	13-23	56.5%	4 ft Lane Turnaround by ALCORN, BECCA	2	3:33	*29-13					
				Sub In: PASS, TONYA Out: ALCORN, BECCA	2	3:03	29-15*	8 ft Right Base Line Turnaround by CASTLE, AMY	3-4	75.0%	6-16	37.5%
				Sub In: ALCORN, BECCA Out: TABB, LAURA	2	2:53						
					2	1:55						
3-4	75.0%	14-26	53.8%	2 ft Lane Follow by MASTERSON, C.	2	1:55	29-17*	Driving Layup by SALYER, LORNA	1-1	100%	7-18	38.8%
					2	1:12	*31-17	Assist by LEWIS, TONYA	1			3
					2	0:58	31-19*	4 ft Lane Turnaround by LEWIS, TONYA	2-4	50.0%	8-19	42.1%
					2	0:32		Assist by BROWN, SHANNON	1			4
					2	0:32		Foul on CASTLE, AMY	1			5
					2	0:29		Sub In: WELLS, BERNITA Out: LEWIS, TONYA				
2		9		Sub In: TABB, LAURA Out: JEFFRIES, JULIE	2	0:29						
				Foul on PASS, TONYA	2	0:17						
				Sub In: JEFFRIES, JULIE Out: TABB, LAURA	2	0:17						
					2	0:17						
					2	0:17		WELLS, BERNITA, 2 Free Throws missed both	0-2	00.0%	3-6	50.0%
					2	0:00		3 pt 23 ft Left Side Jump shot by BROWN, SHANNON, missed	0-1	00.0%	8-20	40.0%
0-1	Tot-1	0-1	Tot-19	Rebound by KERR, COURTNEY	2	0:00						

FIRST HALF SHOT CHART Produced by the KHSAA Sweet Sixteen Stat Crew with FINAL III - a Product of LEXICON SPORTS™



CENTRAL HARDIN					
Player			Player		
31 - ALCORN, BE	3/ 5	60.0%	15 - GRAVELL, R	1/ 2	50.0%
40 - JEFFRIES,	3/ 5	60.0%	35 - HEADORS, C	0/ 1	0.0%
50 - CHITWOOD,	4/ 5	80.0%	54 - PASS, TONY	0/ 3	0.0%
21 - KERR, COUR	0/ 4	0.0%			
24 - MASTERSON,	3/ 4	75.0%			
Layups	1-9 Ft	10-15 Ft	Over 15 Ft	3 Pointers	Total
4 / 4	9 / 15	1 / 5	0 / 1	0 / 4	14 / 29
100.0%	60.0%	20.0%	0.0%	0.0%	48.3%

JOHNSON CENTRAL					
Player			Player		
23 - BLEVINS, S	1/ 6	16.6%	44 - BROWN, SHA	0/ 1	0.0%
53 - LEWIS, TON	2/ 4	50.0%	54 - WELLS, BER	1/ 2	50.0%
21 - SALYER, LO	1/ 1	100.0%			
22 - CASTLE, AM	3/ 4	75.0%			
12 - BLAIR, MEL	0/ 2	0.0%			
Layups	1-9 Ft	10-15 Ft	Over 15 Ft	3 Pointers	Total
2 / 3	6 / 11	0 / 1	0 / 1	0 / 4	8 / 20
66.7%	54.5%	0.0%	0.0%	0.0%	40.0%